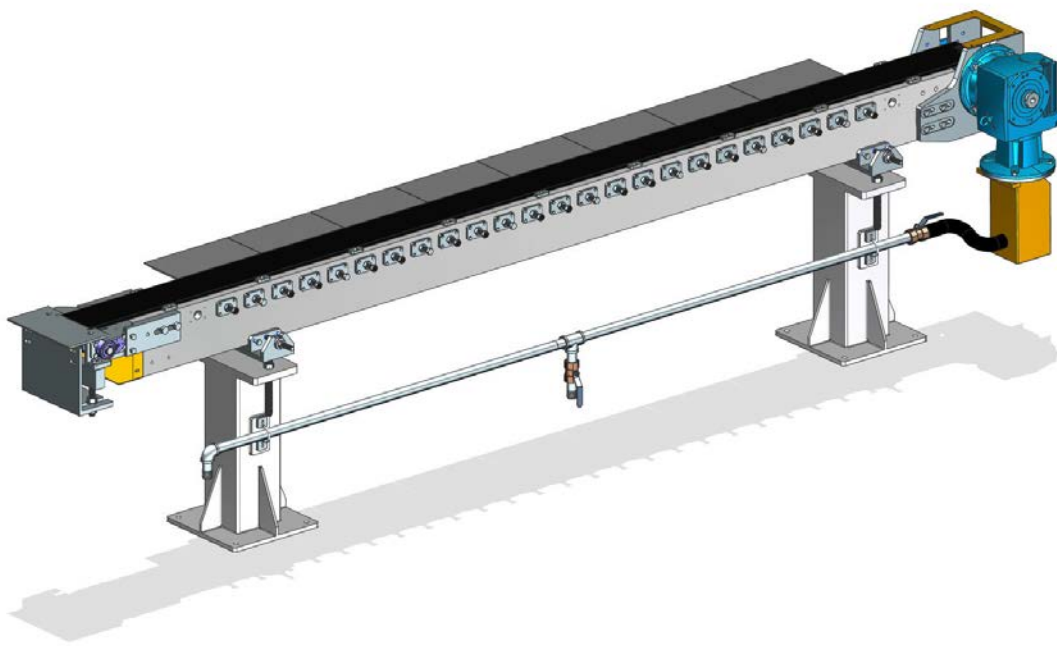


Technical News Bulletin

Steinhausen, April 2016



XConveyor – Cast Iron

- Cast Iron structure reduced vibration, robust heavy duty, better container handling.
- All lehr height supported.
- Prepared single connection to lub system for simple installation. .

Introduction

XConveyor has a unique cast Iron girder, reducing vibrations and minimizing distortion due to the hot environment. It reduces installation service requirements (fluid cooling) and guaranties a long equipment life. Fits nearly to all Lehr widths and heights.

Specification

- Cast Iron Girder
- Stainless Steel Dead Plates
- Hardened Spring Steel Wear Plates
- 6" [152.4mm] Silent Chain Belt
- Supports different Lehr widths and heights

Availability / Application

Supports **182-201**

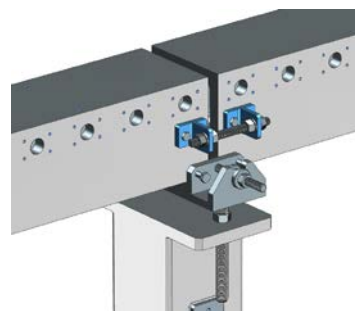
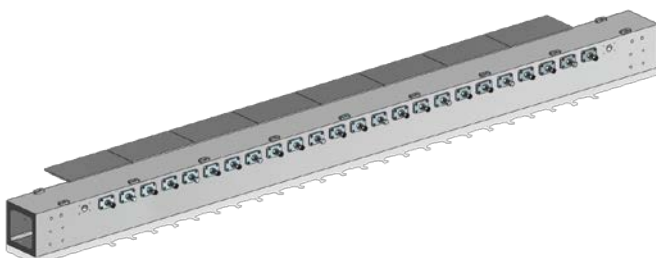
Supports are available in 4 different Height Ranges

Group 1	Lehr Heights	880mm to 965mm
Group 2	Lehr Heights	966mm to 1050mm
Group 3	Lehr Heights	1051mm to 1130mm
Group 4	Lehr Heights	780mm to 879mm

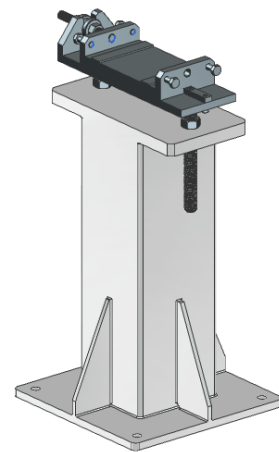
The Support provides adjustment for height, Leveling and positioning to the lehr input roller as shown.

Unique Cast Iron Beam **182- 202-XX**

Standard from 4 up to 7.5 metre in 1/2 metre steps.



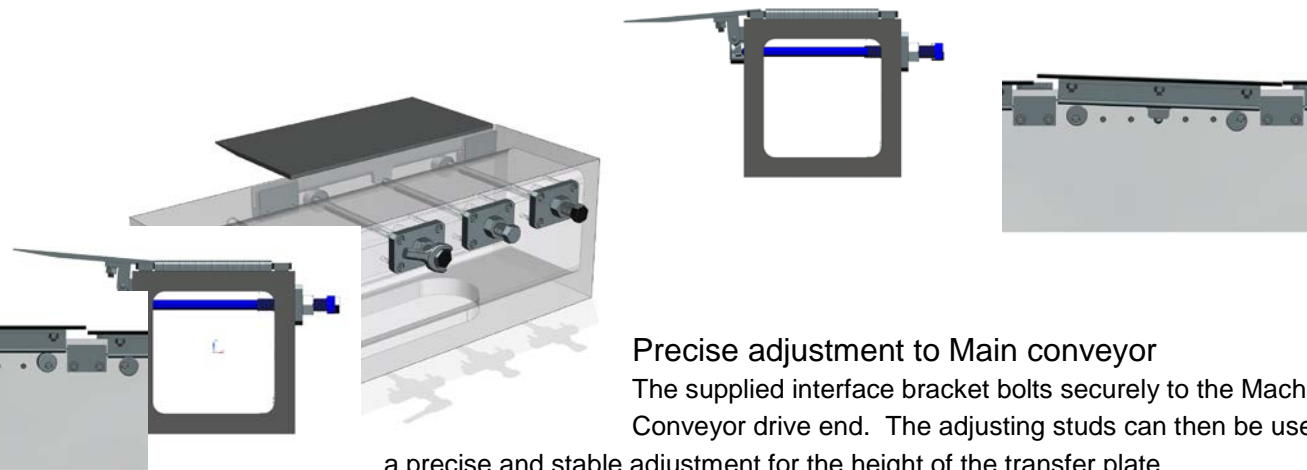
Beams above 5.5 meters are supplied in two pieces with jointing plate, adjusting brackets and an additional center support.



Dead Plate Adjustment 182-213

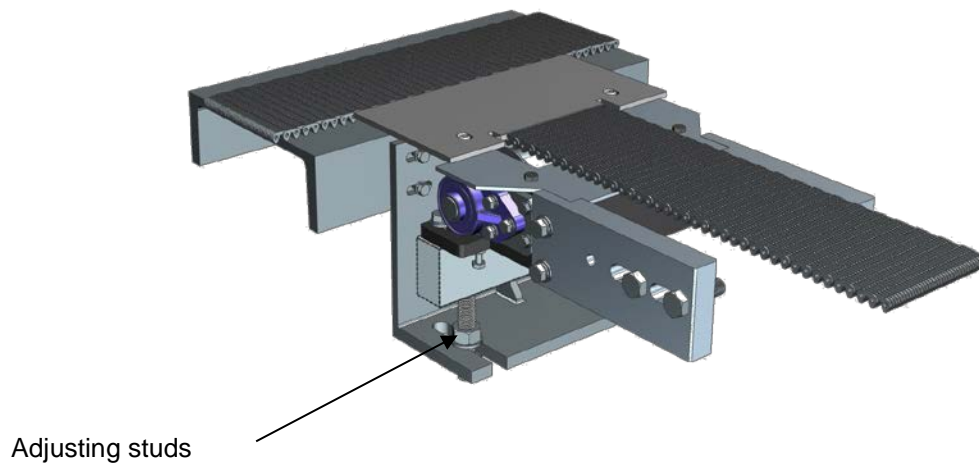
Each individual dead plate is adjustable with three adjusting screws.

- **Tilting**
- **Rocking**



Precise adjustment to Main conveyor

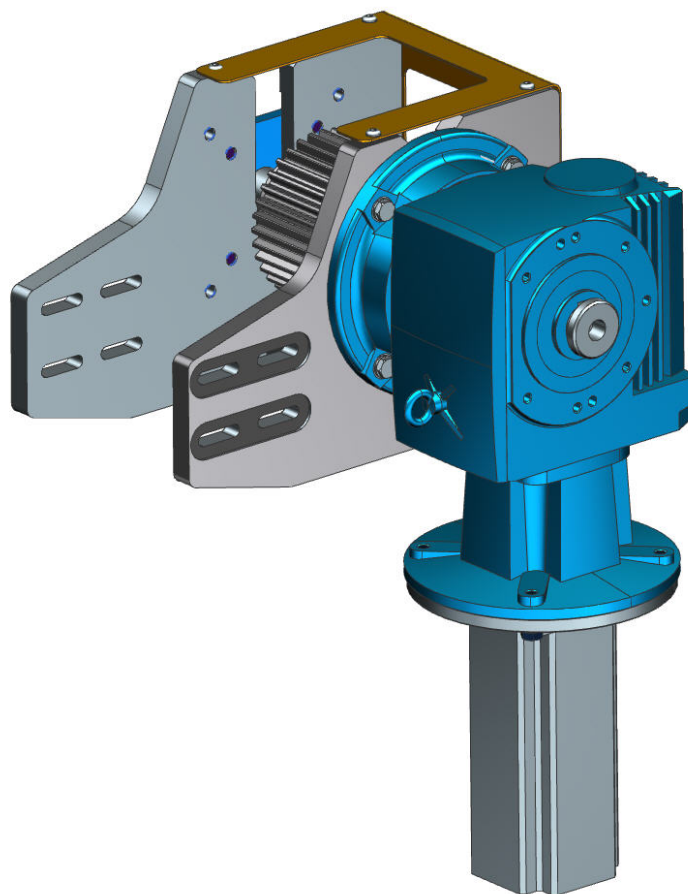
The supplied interface bracket bolts securely to the Machine Conveyor drive end. The adjusting studs can then be used to provide a precise and stable adjustment for the height of the transfer plate.



Drive End 182-204

Standard Groups cater for M112 Flange mounted AC Motors (Reliance) and the and the Emhart Glass WHC Servo Motors.

The gear ratio caters for belt speeds from 6m/min to 72m/min



Installation Requirements

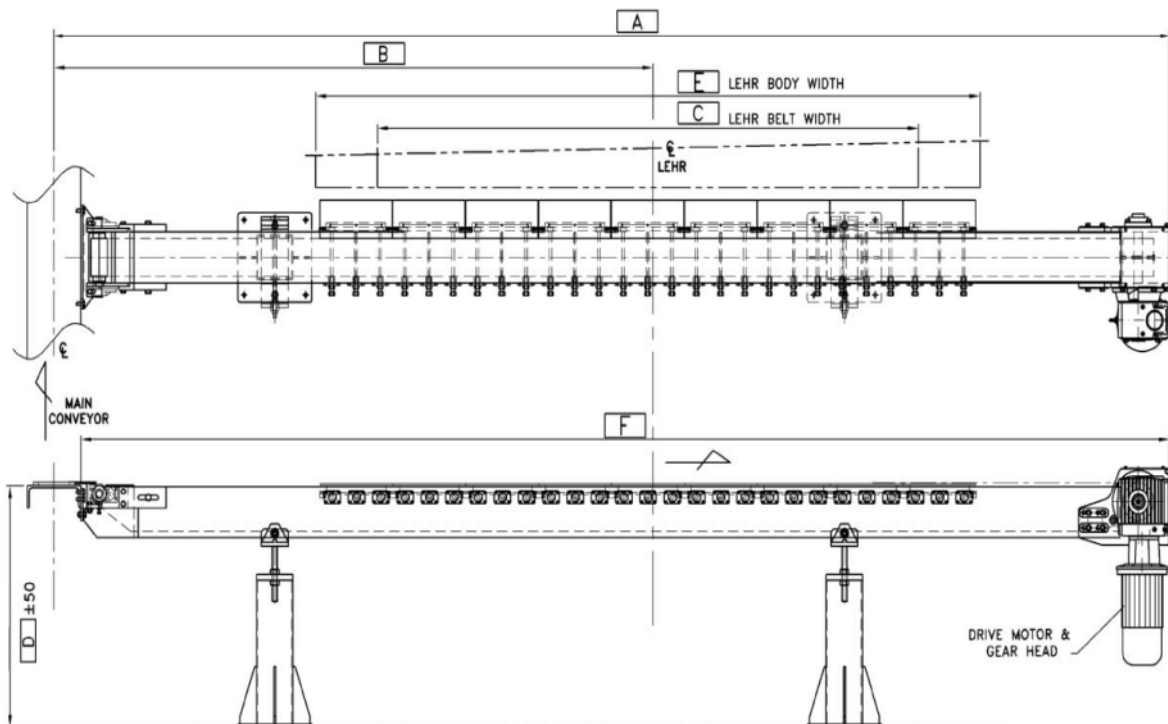
Basic Layout Dimensions required for Quote Specification. See also drawing 182-15900 and 182-15901 for further installation and specification details prior to order.

Required data for a quote

A		mm
B		mm
C		mm
D		mm
E		mm

LH Sweep	
RH Sweep	

Right Hand Shown



Conveyor Belt length	7.5 m	182- 206
Air Cooling Piping	7.5 m	182- 281

Features / Benefits

Features	Benefits
Cast Iron Main structure: Reduced vibration Reduced high temperature distortion Robust heavy duty Fluid cooling not needed	Better container handling Increased stability container handling Longer equipment life No running cost for cooling
All lehr height supported	One fits all
Spring steel belt wear plates	Long girder life time
Adjustable dead plates Tilt/Rocker	Smoother container transition
Adjustable transfer bracket	Guaranties exact transition
Prepared single connection to lub system	Simple installation long life time

Option

Cooling Piping for servo motor built in